

# Swivel castor with wheel brake 541

## M8 50 PUEL

Furniture Castors Series 540 GW - Wheel PUEL

-20 °C - +60 °C

- swivels easily
- wear resistant
- shock proof
- floor protective
- weather proof

### Wheel

coated in polyurethane, 90±3 Shore Aelectrically conductive  
<10<sup>4</sup>Ω

High quality nylon wheel centre

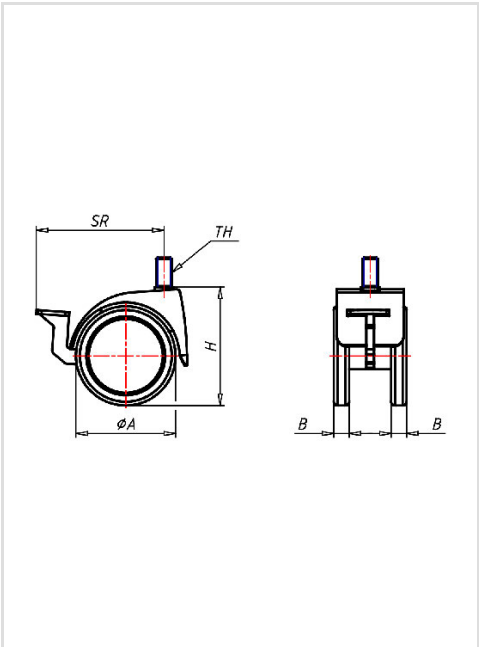
Zinc-die-cast housing - chrome plated  
Swivel bearing with combined  
plain-ball bearing  
Wheel brake - glass fibre reinforced  
Wheel axle revited

Swivel castor with wheel brake	Wheel-Ø A x width B mm: 52x8+8
Load Capacity kg:	40
Load capacity tested according to EN 12530 and EN 12527	
Overall height H mm:	62
Threat mm:	M8x15
Swivel radius SR mm:	69
Wheel bearing:	Nylon plain bearing

### Advantages

- ✓ electrically conductive
- ✓ silent in motion
- ✓ low rolling resistance
- ✓ non-marking
- ✓ high resistance to shocks
- ✓ good chemical resistance

©Copyright 2024 Rollenbau GmbH, www.rollenbau.at 20.05.2024



### Applications

- Health-Professionals